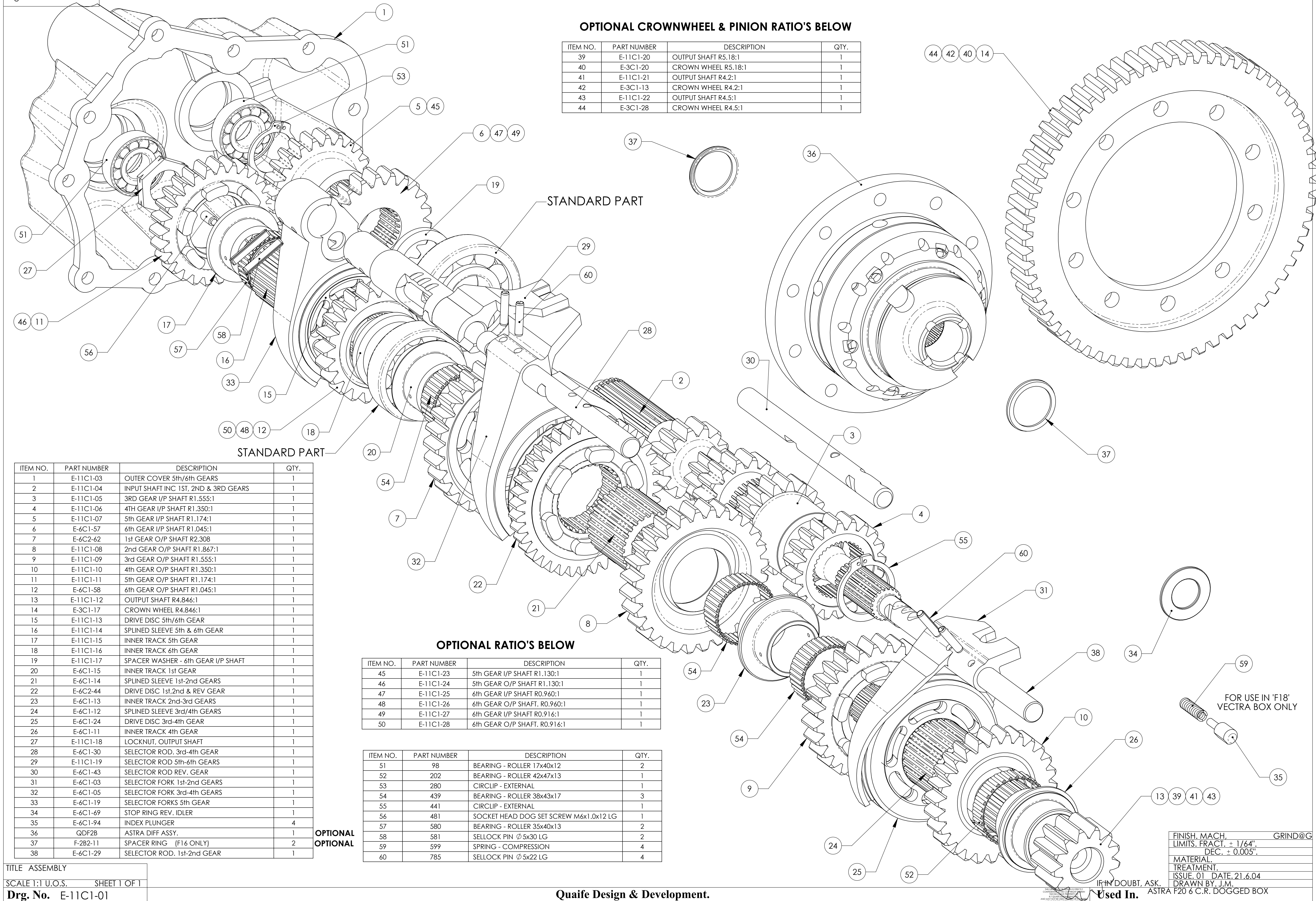


OPTIONAL CROWNWHEEL & PINION RATIO'S BELOW

ITEM NO.	PART NUMBER	DESCRIPTION	QTY.
39	E-11C1-20	OUTPUT SHAFT R5.18:1	1
40	E-3C1-20	CROWN WHEEL R5.18:1	1
41	E-11C1-21	OUTPUT SHAFT R4.2:1	1
42	E-3C1-13	CROWN WHEEL R4.2:1	1
43	E-11C1-22	OUTPUT SHAFT R4.5:1	1
44	E-3C1-28	CROWN WHEEL R4.5:1	1



ITEM NO.	PART NUMBER	DESCRIPTION	QTY.
1	E-11C1-03	OUTER COVER 5th/6th GEARS	1
2	E-11C1-04	INPUT SHAFT INC 1ST, 2ND & 3RD GEARS	1
3	E-11C1-05	3RD GEAR I/P SHAFT R1.555:1	1
4	E-11C1-06	4TH GEAR I/P SHAFT R1.350:1	1
5	E-11C1-07	5th GEAR I/P SHAFT R1.174:1	1
6	E-6C1-57	6th GEAR I/P SHAFT R1.045:1	1
7	E-6C2-62	1st GEAR O/P SHAFT R2.308	1
8	E-11C1-08	2nd GEAR O/P SHAFT R1.867:1	1
9	E-11C1-09	3rd GEAR O/P SHAFT R1.555:1	1
10	E-11C1-10	4th GEAR O/P SHAFT R1.350:1	1
11	E-11C1-11	5th GEAR O/P SHAFT R1.174:1	1
12	E-6C1-58	6th GEAR O/P SHAFT R1.045:1	1
13	E-11C1-12	OUTPUT SHAFT R4.846:1	1
14	E-3C1-17	CROWN WHEEL R4.846:1	1
15	E-11C1-13	DRIVE DISC 5th/6th GEAR	1
16	E-11C1-14	SPLINED SLEEVE 5th & 6th GEAR	1
17	E-11C1-15	INNER TRACK 5th GEAR	1
18	E-11C1-16	INNER TRACK 6th GEAR	1
19	E-11C1-17	SPACER WASHER - 6th GEAR I/P SHAFT	1
20	E-6C1-15	INNER TRACK 1st GEAR	1
21	E-6C1-14	SPLINED SLEEVE 1st-2nd GEARS	1
22	E-6C2-44	DRIVE DISC 1st,2nd & REV GEAR	1
23	E-6C1-13	INNER TRACK 2nd-3rd GEARS	1
24	E-6C1-12	SPLINED SLEEVE 3rd/4th GEARS	1
25	E-6C1-24	DRIVE DISC 3rd-4th GEAR	1
26	E-6C1-11	INNER TRACK 4th GEAR	1
27	E-11C1-18	LOCKNUT, OUTPUT SHAFT	1
28	E-6C1-30	SELECTOR ROD. 3rd-4th GEAR	1
29	E-11C1-19	SELECTOR ROD 5th-6th GEARS	1
30	E-6C1-43	SELECTOR ROD REV. GEAR	1
31	E-6C1-03	SELECTOR FORK 1st-2nd GEARS	1
32	E-6C1-05	SELECTOR FORK 3rd-4th GEARS	1
33	E-6C1-19	SELECTOR FORKS 5th GEAR	1
34	E-6C1-69	STOP RING REV. IDLER	1
35	E-6C1-94	INDEX PLUNGER	4
36	QDF28	ASTRA DIFF ASSY.	1
37	F-282-11	SPACER RING (F16 ONLY)	2
38	E-6C1-29	SELECTOR ROD. 1st-2nd GEAR	1

OPTIONAL RATIO'S BELOW

ITEM NO.	PART NUMBER	DESCRIPTION	QTY.
45	E-11C1-23	5th GEAR I/P SHAFT R1.130:1	1
46	E-11C1-24	5th GEAR O/P SHAFT R1.130:1	1
47	E-11C1-25	6th GEAR I/P SHAFT R0.960:1	1
48	E-11C1-26	6th GEAR O/P SHAFT. R0.960:1	1
49	E-11C1-27	6th GEAR I/P SHAFT R0.916:1	1
50	E-11C1-28	6th GEAR O/P SHAFT. R0.916:1	1

ITEM NO.	PART NUMBER	DESCRIPTION	QTY.
51	98	BEARING - ROLLER 17x40x12	2
52	202	BEARING - ROLLER 42x47x13	1
53	280	CIRCLIP - EXTERNAL	1
54	439	BEARING - ROLLER 38x43x17	3
55	441	CIRCLIP - EXTERNAL	1
56	481	SOCKET HEAD DOG SET SCREW M6x1.0x12 LG	1
57	580	BEARING - ROLLER 35x40x13	2
58	581	SELLOCK PIN Ø 5x30 LG	2
59	599	SPRING - COMPRESSION	4
60	785	SELLOCK PIN Ø 5x22 LG	4

TITLE ASSEMBLY
 SCALE 1:1 U.O.S. SHEET 1 OF 1
Drq. No. E-11C1-01

FINISH. MACH. GRIND@G
 LIMITS. FRACT. + 1/64".
 DEC. + 0.005".
 MATERIAL.
 TREATMENT.
 ISSUE. 01 DATE. 21.6.04
 DRAWN BY. J.M.
 Used In. ASTRA F20 & C.R. DOGGED BOX